



*Give your event a unique character  
in an exceptional environment...*



For all your **business events**, **product launches**, **press conferences** or **private parties** in Paris, the **Champs Elysees Mac Mahon hotel** welcomes you in its unique setting, just a stone's throw from the **Arc de Triomphe**.

With its original design mixing the elegance of the **Empire style** with a **subversive "rock" touch**, our lounge bar, the **Noham Café**, offers a capacity of 50 to 100 people. The dinner room extends to a **beautiful terrace flooded by natural light** and features an **adjustable lighting**, to create a variety of moods.

The Noham Café offers all the **equipment** needed for the proper running of your event: 51" plasma screen for presentations, wireless microphone, free wifi ...

And to seduce the taste buds of your guests, the Noham Café has partnered with **Dalloyau**, one of **Paris most renowned Gastronomy houses**, to provide you with a delicious selection of sweet and savoury "**Gourmet Breaks**".

Let's your event be memorable at the Champs Elysees Mac Mahon!

## INFORMATION & QUOTATION

+331 43 80 23 00

Françoise PICARD – Manager

[francoise.picard@book-inn-france.com](mailto:francoise.picard@book-inn-france.com)

## CHAMPS ELYSEES MAC MAHON HOTEL : 35 Rooms & 5 Suites | A luxury setting in the heart of Napoleonic Paris

Hotel fully accessible to disabled people. All rooms are equipped with individual Nespresso machines, king size beds and heating Japanese toilet. Room service available from 7am to 12am.

**8 SUPERIOR ROOMS** (from 14 to 18m<sup>2</sup>)

**12 DELUXE ROOMS** (from 20 to 22m<sup>2</sup>)

**15 EXECUTIVE ROOMS** (from 22 to 25m<sup>2</sup>)

**2 JUNIOR SUITES** (28m<sup>2</sup> | lounge area)

**2 PRESTIGE SUITE** (32m<sup>2</sup> | lounge area | kitchen corner)

**1 IMPERIAL SUITE** (40m<sup>2</sup> | lounge area | bathroom with hammam shower for two, balneo-chromotherapy jacuzzi, two wash basins and a separate Japanese toilet)



**NOHAM CAFÉ : Lounge bar 50/100pax | Our know-how at the service of your events**

## THE PLACE:

- A lounge bar with a capacity of 50 people seated / 100 standing
- A glazed terrace with a view on the Arc de Triomphe
- An stunning interior design by Alexandre Danan
- A professional staff to assist you: supervisor, bar manager, security officer, reception staff...



## FACILITIES :

- A complete equipment for successful presentations: 51" plasma screen, sonorisation, free Internet access, HF wireless microphone, adjustable lighting, air conditioning...
- Renowned partners to make the best of your events (snacks and cocktails on demand. For a quotation, please contact us.)



... AND FOR A GOURMET BREAK : The expertise of a famous gastronomy house in an unique setting



## ACCORDING TO YOUR DESIRE, ALL THROUGH THE DAY:

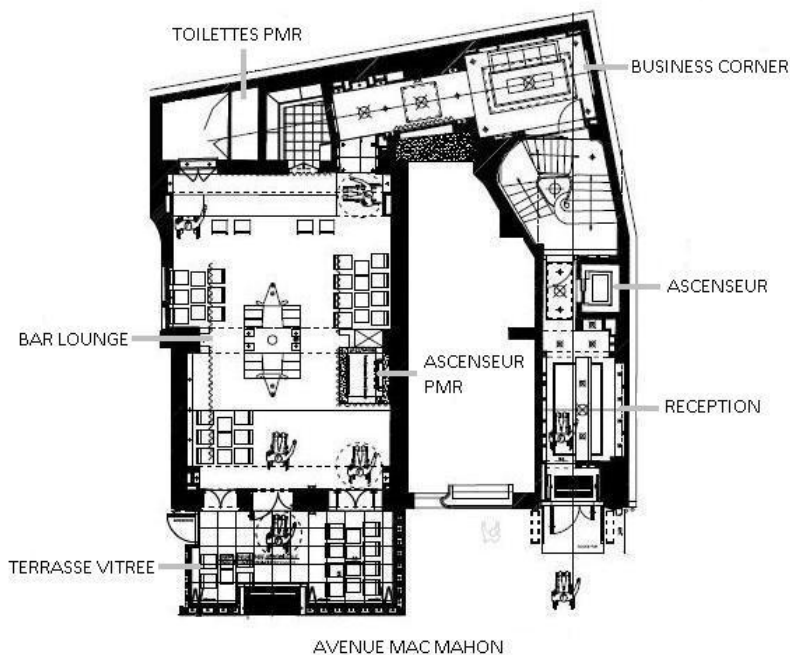
- Varied breakfast formulas
- Sweet and savoury gourmet breaks by Parisian gastronomy house Dalloyau
- Tea-time formulas
- Large choice of beverages (softs drinks, fine tea, wine, Champagne, cocktails and mocktails proposed by our bartender)

Many type of snacks available!

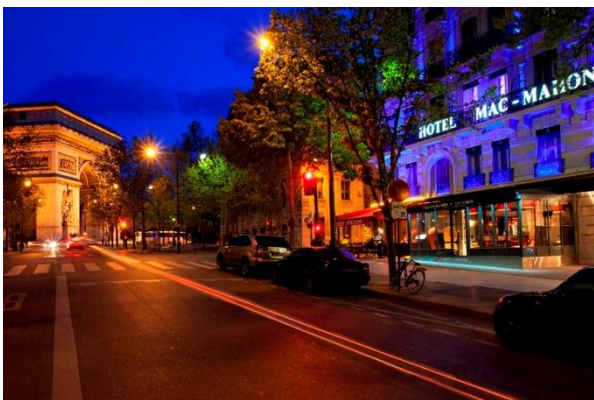
Contact us for more information...



**TOTAL SURFACE AREA : 85 m<sup>2</sup> | Bar - Restaurant 65 m<sup>2</sup> | Terrace 20 m<sup>2</sup>**



## ACCESS



### PARKING

Public Parking VINCI | 24h/24 – 7 days / 7  
9 TER, Avenue Mac Mahon 75017 PARIS

### LOCATION

Train station Paris – Saint Lazare - 10mn away  
17<sup>th</sup> district – Many theatres, cinemas, shops & restaurants  
Subway lines : #1, 2, 6 – Charles de Gaulle Etoile  
RER A Train station – Charles de Gaulle Etoile  
Paris - Orly Airport (ORY) : 6 km southern Paris -  
Paris - Charles de Gaulle Airport (CDG) : 35km Northern Paris

### RATES

The Champs Elysees Mac Mahon Hotel proposes tailor-made solutions for your private parties or corporate events from 50 people :

- Private hire / Open Bar Champagne : from 65€HT / person
- Private hire / Cocktail dinner by Dalloyau : from 95€HT / person

For further information or for a quotation, please contact us!